



18 & 20 Pioneers Crescent Bangalow NSW

7 5

Tranquilly and privately nestled amidst the rolling green hills of the Bangalow and Byron Bay hinterland, this extraordinary property presents a lifestyle and combined commercial opportunity that is truly special. Consisting of two separate properties on 270 acres that are to be sold in one line, this is the ideal chance to enter a highly prized north coast community.

Divided into two lots, Lot 18 is 100 acres and comes complete with an ultra-contemporary abode of undeniable luxury and design. Lot 20 is 170 acres, and includes a charming Queenslander ranch style home with an established macadamia orchard of 13,500 trees and average yield of 120 tonnes. There is potential to keep the property intact, divide as currently listed or subdivide further to accommodate the growing needs of the Bangalow village community (STCA).

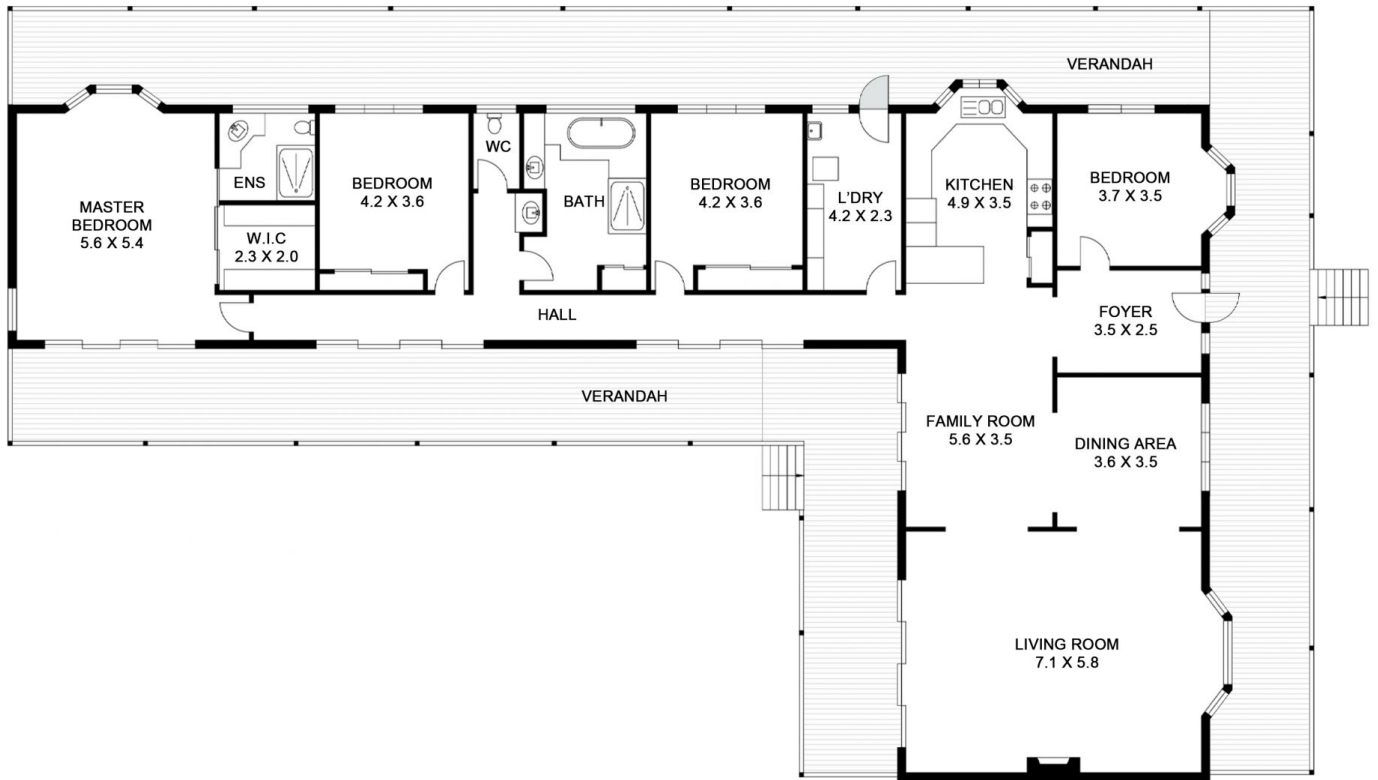
Price : Expressions Of Interest Closing 21st June, 4pm
Land Size : 270 Acres
View : <https://www.byronbaysir.com.au/sale/nsw/northern-rivers/bangalow/residential/acreage-semirural/7985103>



Grant Dale
02 8355 6783



James McCowan
02 8355 6783



BANGALOW

20 Pioneers Crescent,

Scale in metres, Indicative only. All information contained herein is obtained from sources we believe to be accurate. We cannot guarantee its accuracy. Interested persons should make and rely on their own enquiries. This plan is a representation of the buildings on site and not an indication of council approval. Floorplan as illustration only - all figured dimensions approximate - do not scale - no liability accepted



Sotheby's



BANGALOW

18 Pioneers Crescent,

Scale in metres, Indicative only. All information contained herein is obtained from sources we believe to be accurate. We cannot guarantee its accuracy. Interested persons should make and rely on their own enquiries. This plan is a representation of the buildings on site and not an indication of council approval. Floorplan as illustration only - all figured dimensions approximate - do not scale - no liability accepted



Sotheby's