

283-285 Mount Irvine Road Mount Irvine NSW

5 2 7

Nestled amidst the serene landscape of Mount Irvine, Cooinda, meaning 'Happy Place' in the local indigenous language, is a captivating estate that spans an impressive 48.5 acres of lush rainforest and open landscaped spaces. This exceptional property offers a unique blend of pastoral charm and modern living, making it an ideal retreat for those seeking tranquillity, inspiration, and a connection to nature. This is the perfect blend of agricultural and homestay potential or the opportunity for AirBnB.

Cooinda boasts two residences, encompassing a total of 5 well-appointed bedrooms and 2.5 bathrooms. Each home is a haven of comfort, designed to maximise natural light and the stunning vistas of the surrounding countryside and gardens. The interiors are a testament to thoughtful design, offering spacious living areas that seamlessly blend functionality with aesthetic appeal.

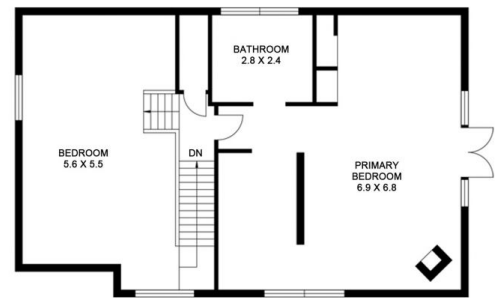
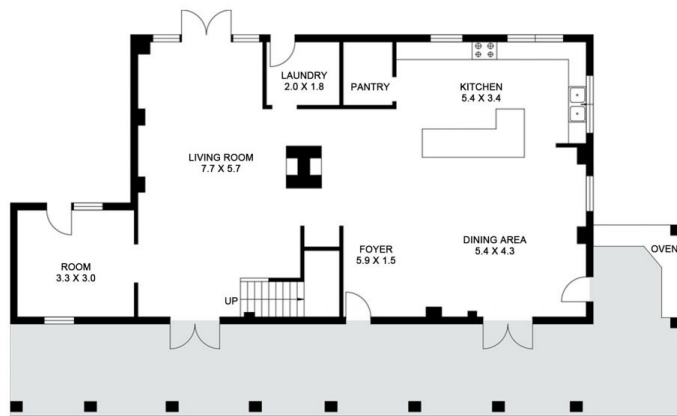
Price : For Sale \$2,850,000
Land Size : 18.91 ha
View : <https://www.byronbaysir.com.au/sale/nsw/blue-mountains-surrounds/mount-irvine/residential/rural/7957395>



James McCowan
02 8355 6783



Grant Dale
02 8355 6783



MOUNT IRVINE 283/285 Mount Irvine Rd



Sotheby's

Scale in metres. Indicative only. All information contained herein is obtained from sources we believe to be accurate. We cannot guarantee its accuracy. Interested persons should make and rely on their own enquiries. This plan is a representation of the buildings on site and not an indication of council approval. Floorplan as illustration only - all figured dimensions approximate - do not scale - no liability accepted