



306 Manar Road Braidwood NSW

8 3

NSW Sotheby's International is proud to launch 'Manar Homestead' to the market for the first time since it was settled in 1834 with over 6 generations of single-family ownership.

Sitting on 80ha (200 acres) of fertile land with direct access to Manar Creek in a private and stunning location being just 45 minutes to Canberra and under 3 hours to Sydney, Manar homestead is like no other.

Complemented by 10 acres of established gardens with wonderful mature trees and meandering paths, backed up with excellent infrastructure including 8 stand stone shearing shed, 2 separate houses, extra guest accommodation and wonderful 11 bedroom shearers quarters.

Manar Homestead has been 190 years in the making and the time has come for its new custodians.

A wonderful piece of Australian history could be yours.

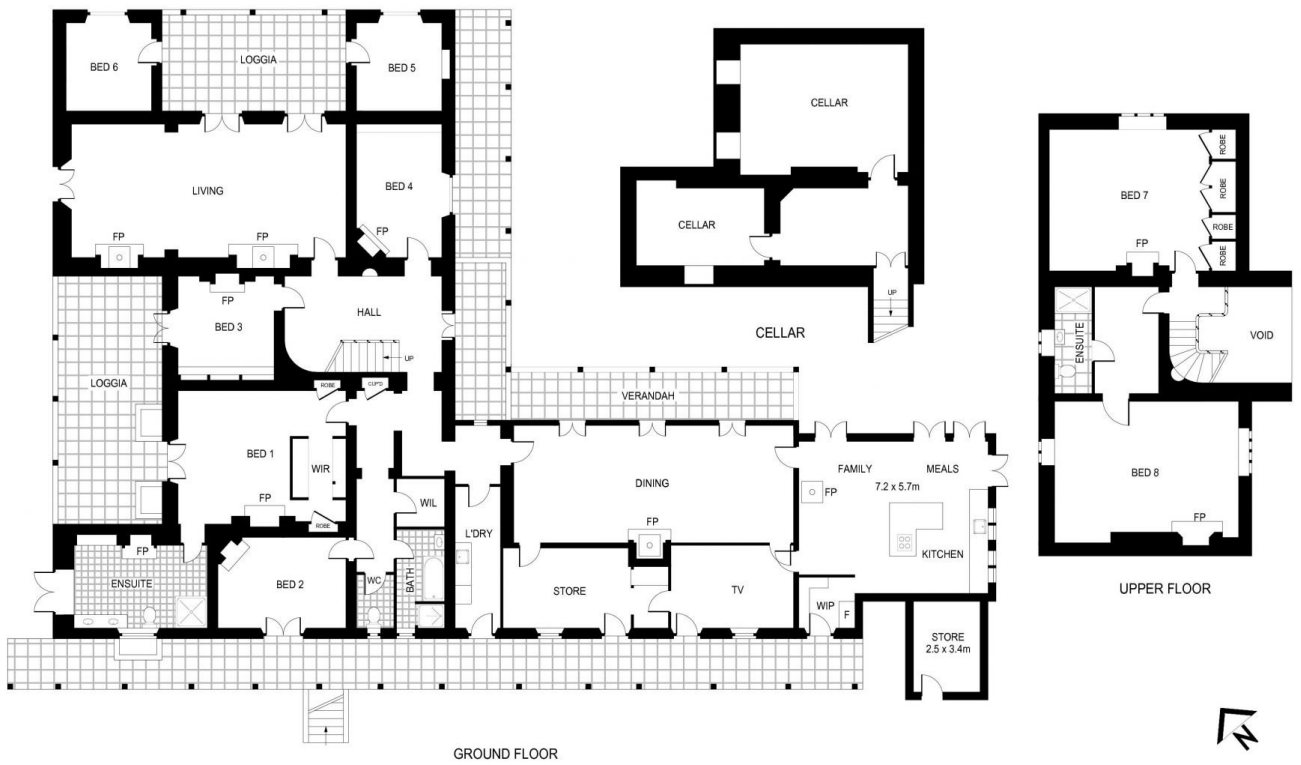
Price : For Sale
Land Size : 80 ha
View : <https://www.byronbaysir.com.au/sale/nsw/southern-tablelands/braidwood/residential/acreagesemirural/7934669>



David Medina
02 8355 6783



James McCowan
02 8355 6783



GROUND FLOOR

UPPER FLOOR


FLOOR PLAN

PLANS SHOWN ONLY INDICATIVE OF LAYOUT. DIMENSIONS ARE APPROXIMATE.
 Ref. No: 108207

'Manar' 306 Manar Road, Manar