



## 106 Rosebank Road Rosebank NSW

4 2 5

Discover the epitome of country living at 106 Rosebank Rd, Corndale. Set on 71 acres of breathtaking land, this property boasts a meticulously restored 1920's Queenslander home surrounded by 2600 thriving macadamia trees. Step inside to find a harmonious blend of timeless elegance and modern comfort, with spacious living areas, a gourmet kitchen, and charming period features throughout. Outside, the lush gardens and expansive outdoor entertaining area provide the perfect backdrop for enjoying the serene surroundings. Ideally located close to Clunnes and Byron Bay, this property offers both seclusion and convenience, making it a rare opportunity to own your own piece of paradise. Don't miss out - schedule your private viewing today and start living the lifestyle you've always dreamed of.

**Price** : Guide \$1,900,000  
**Land Size** : 70.8 Acres  
**View** : <https://www.byronbaysir.com.au/sale/nsw/northern-rivers/rosebank/residential/acreages/emirural/7904169>



**Grant Dale**  
02 8355 6783

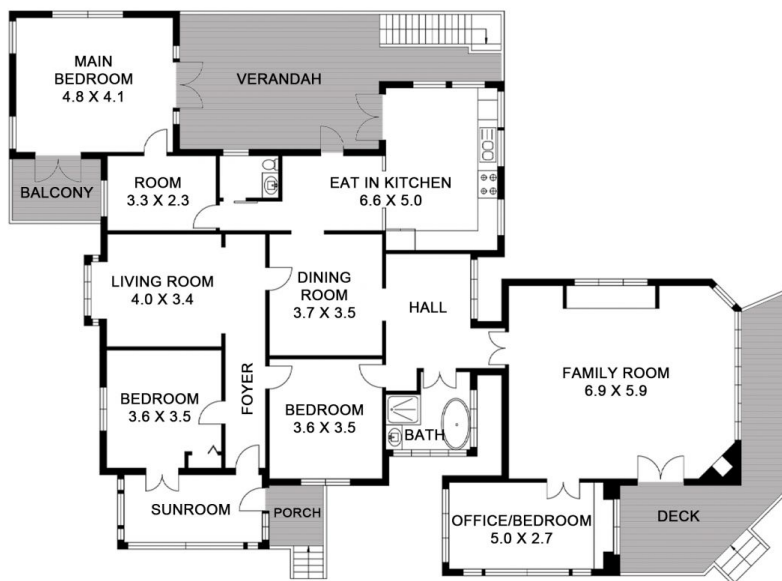


**James McCowan**  
02 8355 6783





LOWER LEVEL



UPPER LEVEL

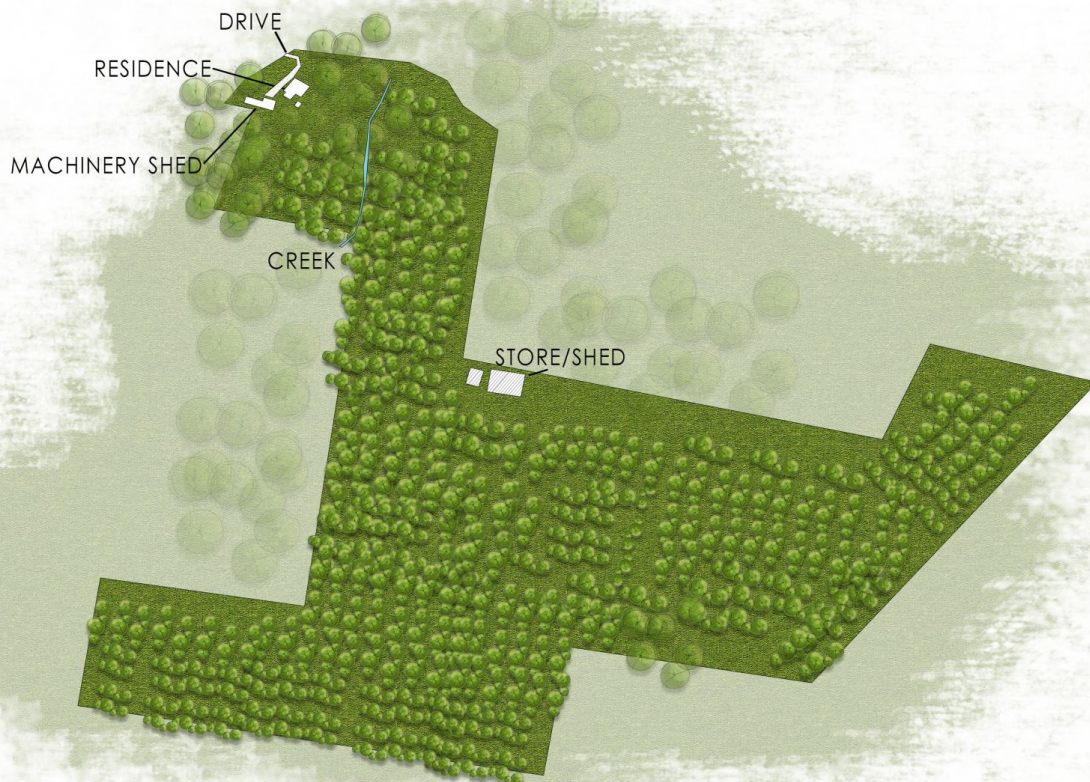
## ROSEBANK

106 Rosebank Rd,

Scale in metres, Indicative only. All information contained herein is obtained from sources we believe to be accurate. We cannot guarantee its accuracy. Interested persons should make and rely on their own enquiries. This plan is a representation of the buildings on site and not an indication of council approval. Floorplan as illustration only - all figured dimensions approximate - do not scale - no liability accepted



Sotheby's



## ROSEBANK

106 Rosebank Rd

Scale in metres, Indicative only. All information contained herein is obtained from sources we believe to be accurate. We cannot guarantee its accuracy. Interested persons should make and rely on their own enquiries. This plan is a representation of the buildings on site and not an indication of council approval. Floorplan as illustration only - all figured dimensions approximate - do not scale - no liability accepted



Sotheby's